



# Alton Renewal Plan

## INTRODUCTION

Presented by  
HTA Design LLP

24 October  
2024



**Alton**  
RENEWAL PLAN



# Roehampton Network

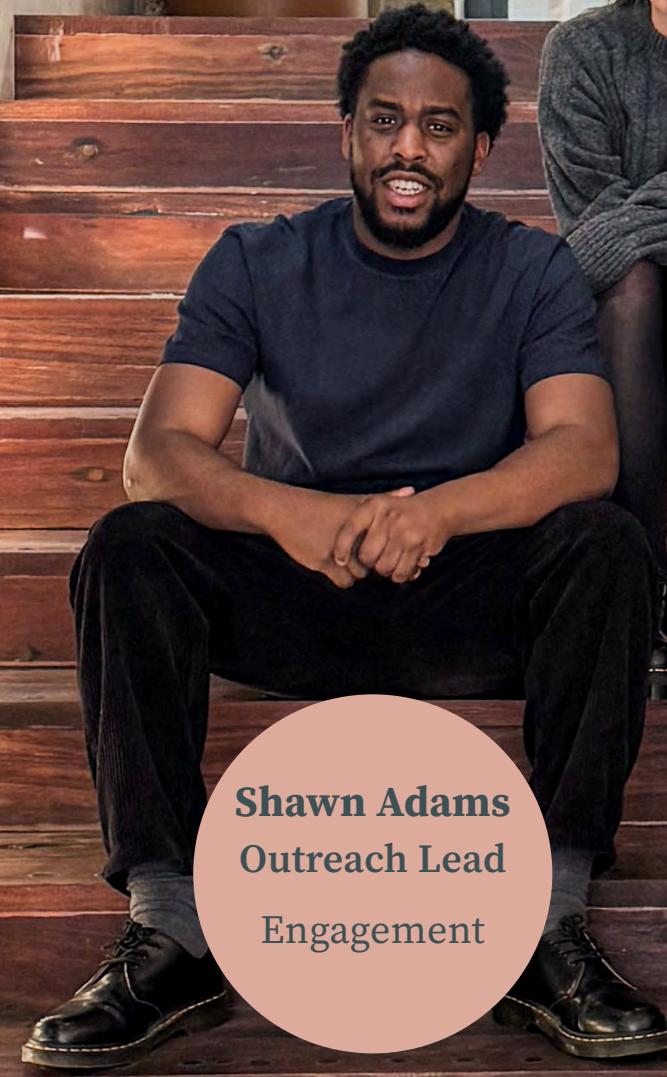
24 October 2024

## Contents

- Introducing the HTA team
- Scope of work
- Engagement undertaken so far
- Key themes for us to address
- Programme and key milestones



**Simon Bayliss**  
Managing Partner  
Project Lead



**Shawn Adams**  
Outreach Lead  
Engagement



**Becca Rose**  
Urban Designer  
Design Team



**David Morton**  
Associate Partner  
Design Team



**Sarah Nottet-Madsen**  
Architect  
Design Team



**Lucy Smith**  
Partner  
Engagement



**Andrew Kavanagh**  
Senior Urban Designer  
Design Team



WHO WE ARE

AJ100  
**Employer of  
the Year**  
2018 | 22 | 23

AYA  
**Net Zero  
Architect**  
2020 | 22

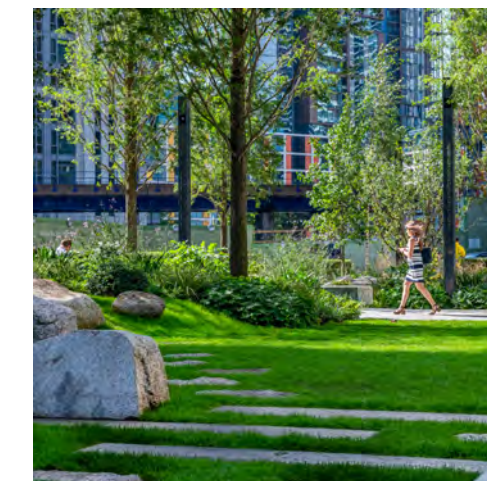
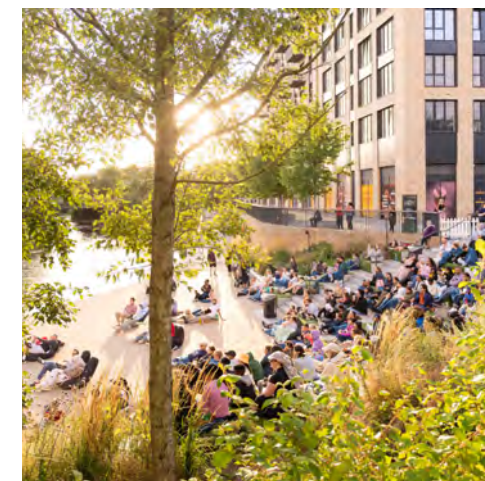
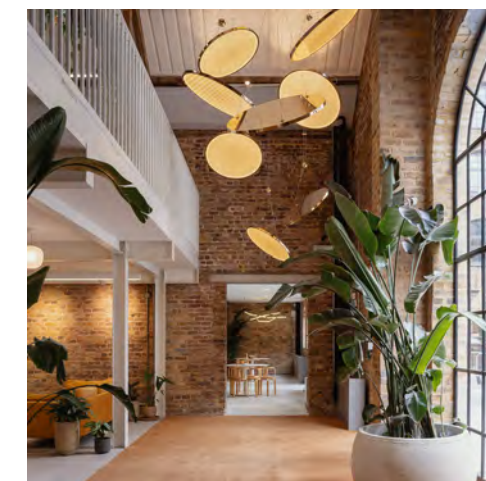
AYA  
**Public Realm  
Architect**  
2019

BUILDING  
**Practice of  
the Year**  
2019

**housing people**



# Making great places to live...



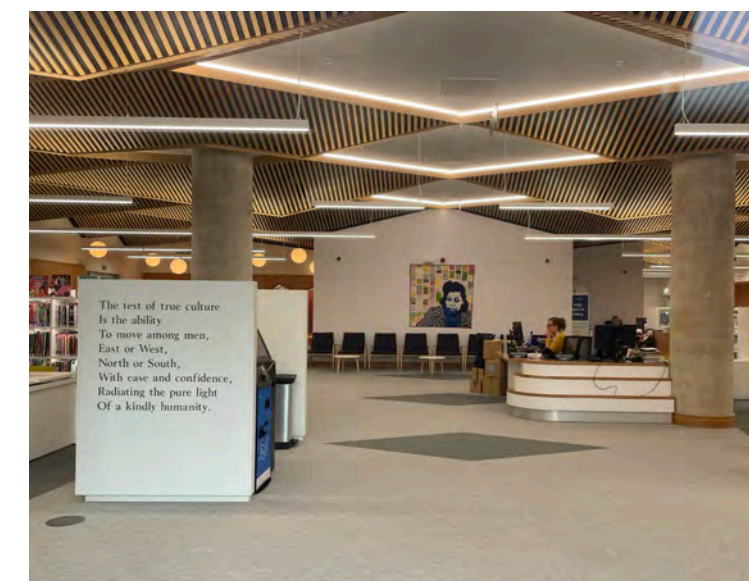
WHAT WE DO

# ... with communities



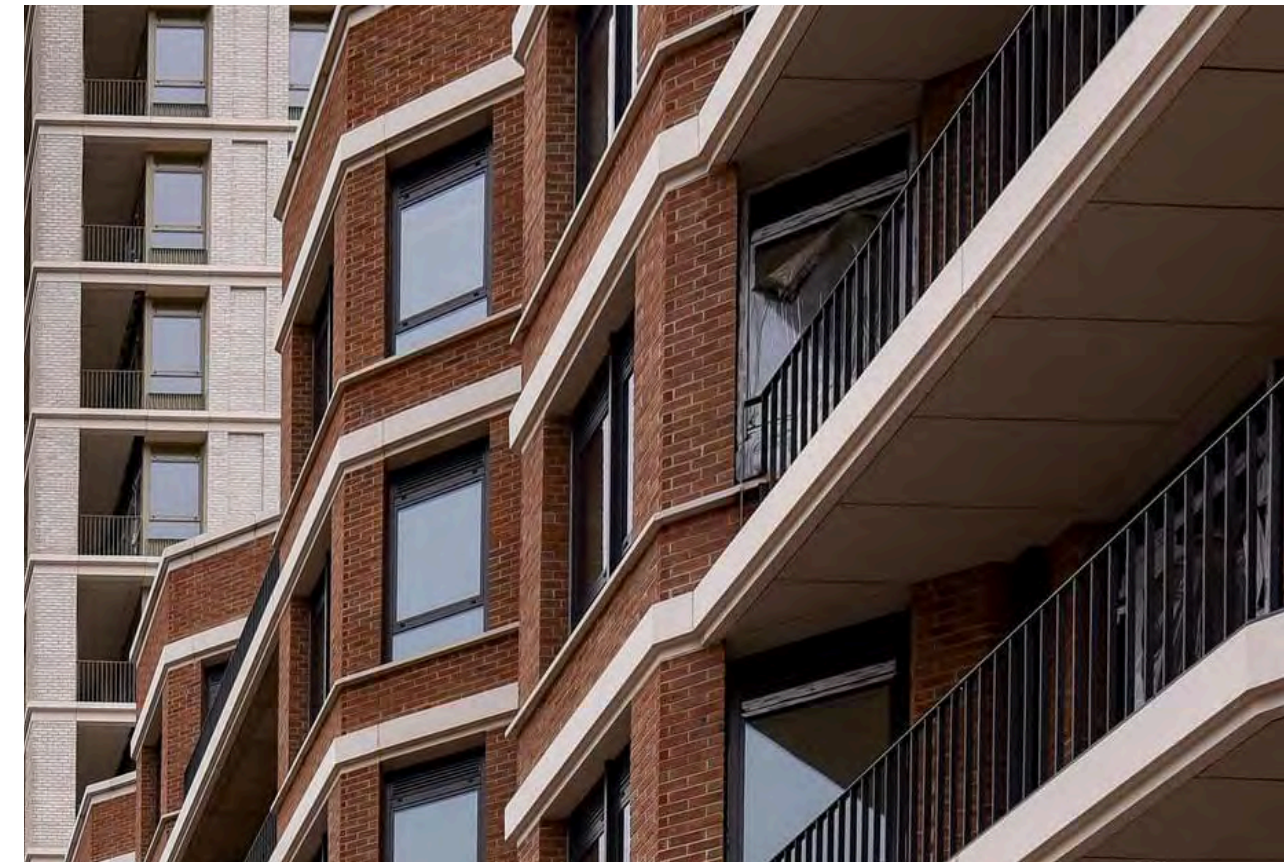
# HTA Project Precedent

Aylesbury Estate, Southwark



# HTA Project Precedent

Winstanley & York Road Estates, Battersea





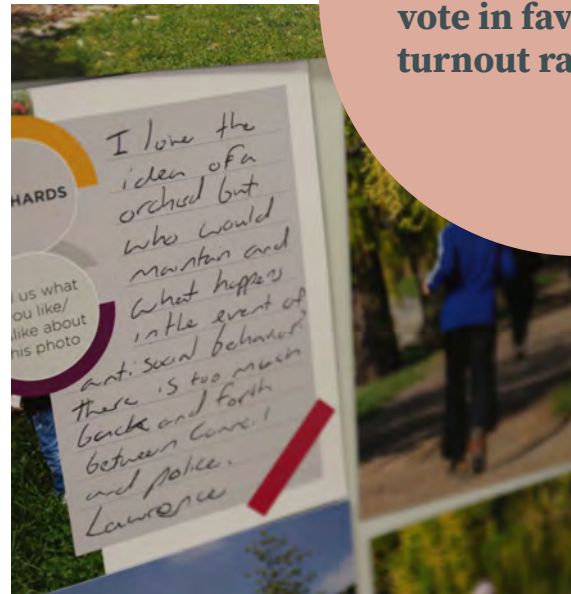
# HTA Project Precedent

Joyce & Snells Estate, Enfield



**Resident's ballot in 2022, achieving a 78.5% positive vote in favour, from a turnout rate of 85.5%**

CASE STUDY



I love the idea of an orchard but who would maintain and what happens in the event of anti-social behaviour there is too much back and forth between Council and police. Lawrence

# Scope of work

Our briefing - what's important to the community

## Community

Improved community facilities, shops and youth facilities

## Neighbourhood

Improved estate management, maintenance & perceptions around safety, Protection of open space

## Accessibility

Improved local bus services, accessibility & movement through the estate, support for new routes and access to a wider Roehampton

## Economic Inclusion

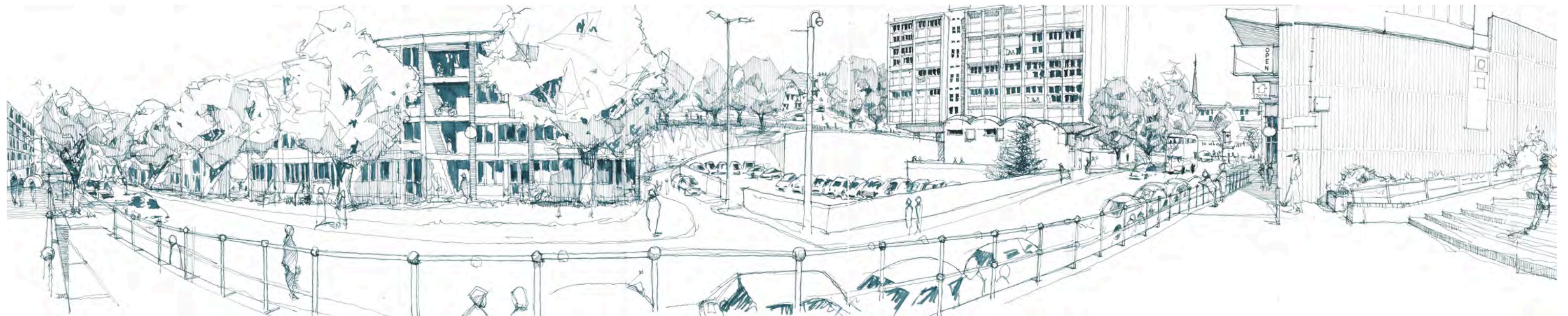
Attracting new shops and businesses, More skills, training and employment opportunities

## Environment

Improved energy efficiency of homes & balance between the number of homes/ greenspace

## Homes

Support for more Council homes and a higher proportion of affordable homes, Addressing overcrowding



# Scope of work

What we have been asked to do

- A detailed review of the preferred renewal plan option
- Site analysis / feasibility of other opportunity areas
- Designing the preferred option up to outline planning
- Supporting resident and stakeholder engagement
- Coordinating with parallel Place Shaping projects where required



# Empowering the community

## Our approach



Build on the existing community



Open and honest communications



Listening and learning



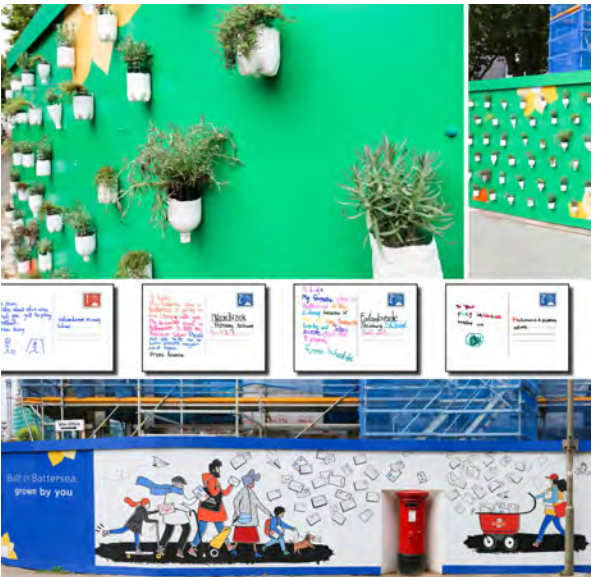
A site presence



Outreach



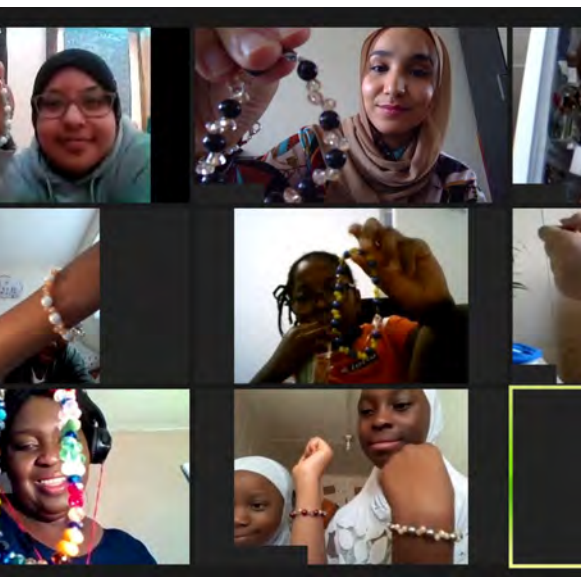
Co-design elements



Creative approaches



Evaluate and shape



Digital



Festivals and events

# Scope of work

## Engagement so far

Date	Activity	Attendees	Key Purpose
4th September 2024 11am	Cllr Dickerdem 1-1	Cllr Aydin Dickerdem + WBC Alton team	Introduction meeting - scope and wky key decisions made
13th September 2024 2-4pm	Ward Councillors Monthly Meeting	MP Fleur Anderson Cllr Matthew Tiller Cllr Graeme Henderson Cllr Jenny Yates Cllr Aydin Dickerdem Matthew Whitty + WBC Alton team	Introduction meeting - scope, programme and team intro
26th September 2024 12-2pm	Over 60'S Lunch Club	Key conversations - Pam, Jean, Cathy, Gwen, Pauline	Listening & learning, introductions
3rd October 2024 12am	Cllr Dickerdem 1-1	Cllr Aydin Dickerdem + WBC Alton team	Site walkabout
4th October 2024	Our Roehampton	Noreen and Angus	Introduction and discussion around meaningful engagement and how community will be involved going forward
10th October 2024	Ward Councillors Monthly Meeting	Cllr Matthew Tiller Cllr Graeme Henderson Cllr Jenny Yates Matthew Whitty + WBC Alton team	Monthly update on engagement activity and project progress
11th October 2024 4.30-6.30pm	Youth Advisory Panel	x6 young people, Kevin Ochere, Heritage advisor	Walk to 'the Bull' and observations session, creative art session following observations
12th October 2024 11-1pm	Meet the Design Team public event	Open public event	General listen and learn session open to all
15th October 2024 7pm	Roehampton Partnership	Rev Rey Cllr Matthew Tiller Cllr Graeme Henderson Cllr Jenny Yates	Introduction and discussion around our role and what we will be doing
24th October 2024 4-5pm	Roehampton Network		
6th November 2024 3pm	Our Roehampton walkabout		



Site walkabout with WBC Alton team and Cllr Aydin Dickerdem - 03.10.24



Youth Advisory Panel - 11.10.24



Meet the Design Team event - 12.10.24



# Scope of work

## Future Engagement

### Listen and Learn

We're trying to meet as many of you as possible, to hear what you think about the Alton.

We'd like to hear about your personal experiences of living here, and how you think we can help make it a better place for all.



### Workshops

Running open workshops helps us to gather lots of immediate feedback directly from the community. It helps us to form a picture of what everybody thinks and helps you to share opinion and discuss in an open forum.



### Walkabouts

By walking about the Alton with you, we get to see and hear real issues rather than just looking at drawings.

It helps us to understand how you use your neighbourhood, and how you'd like to see it change.



### Events

Alongside all of these activities, we will be holding regular sessions where we can feedback to everyone.

We will show design progress, and report back how the community has helped shape the design. There will be opportunities to feedback throughout the entire process.



### Co-design projects

There will be specific projects that we will need your help with. We will identify these projects and create opportunities for people to be involved in designing certain elements of the project.

Co-design projects are most successful if we can have input from a wide range of voices.



# Key themes for us to address

## Danebury Neighbourhood

- Residential - mixed use typologies
- Public realm
- Links to the wider Estate - permeability
- Retail options

## 166 Roehampton Lane

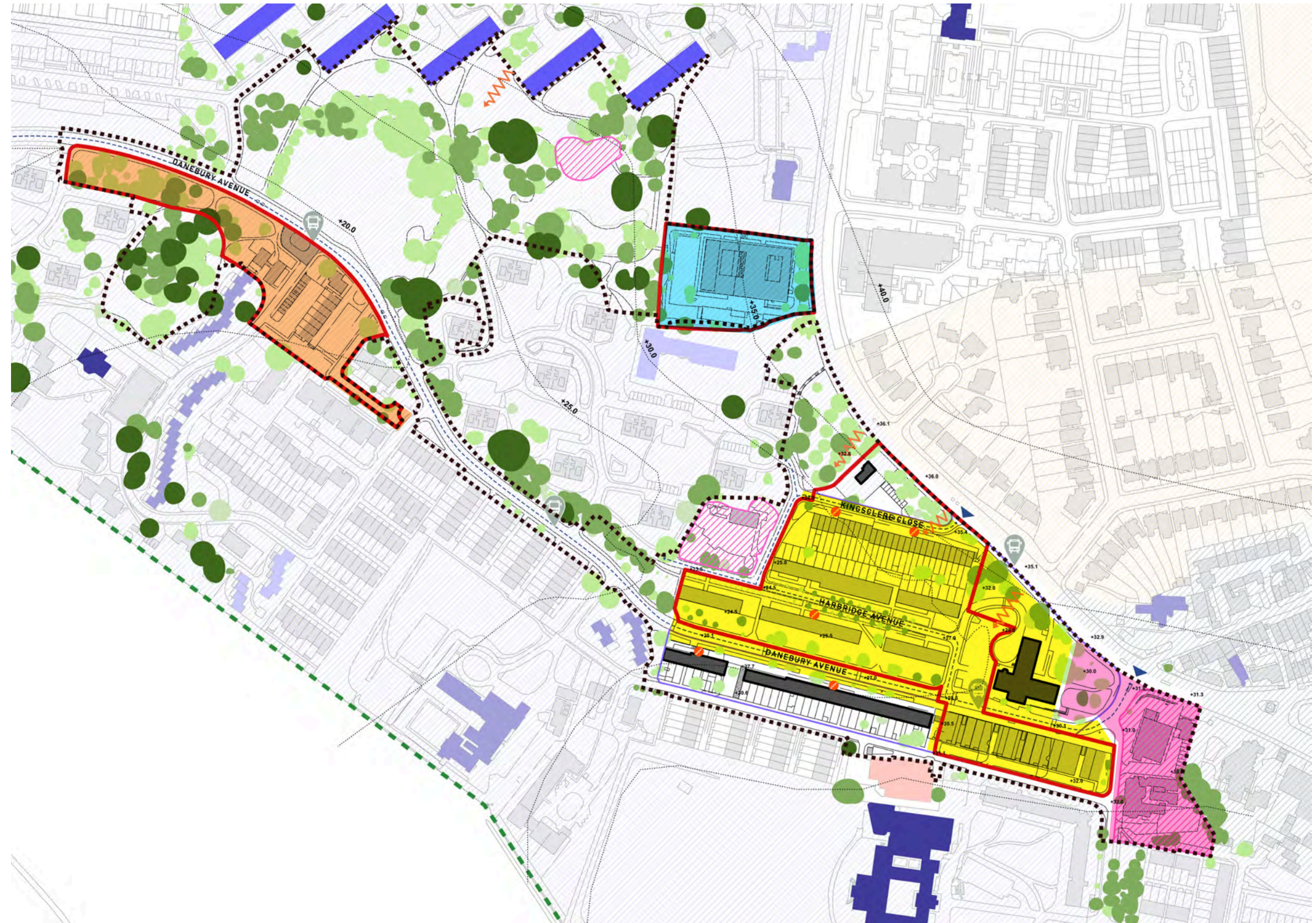
- Residential
- Frontage to Roehampton Lane
- Links to the park and wider Estate

## Portswood Place

- Family hub and Nursery
- Health and Retail opportunities
- Options for residential uplift
- Protected view corridors

## Community Hub

- Responding to the new renewal plan
- A gateway to the site
- Community uses & Library
- Residential component



# Key themes for us to address

- Review the consented masterplan and other design commissions
- Test new housing solutions
- Develop an approach to amenity space and community uses
- Develop an approach to new shops and cafes





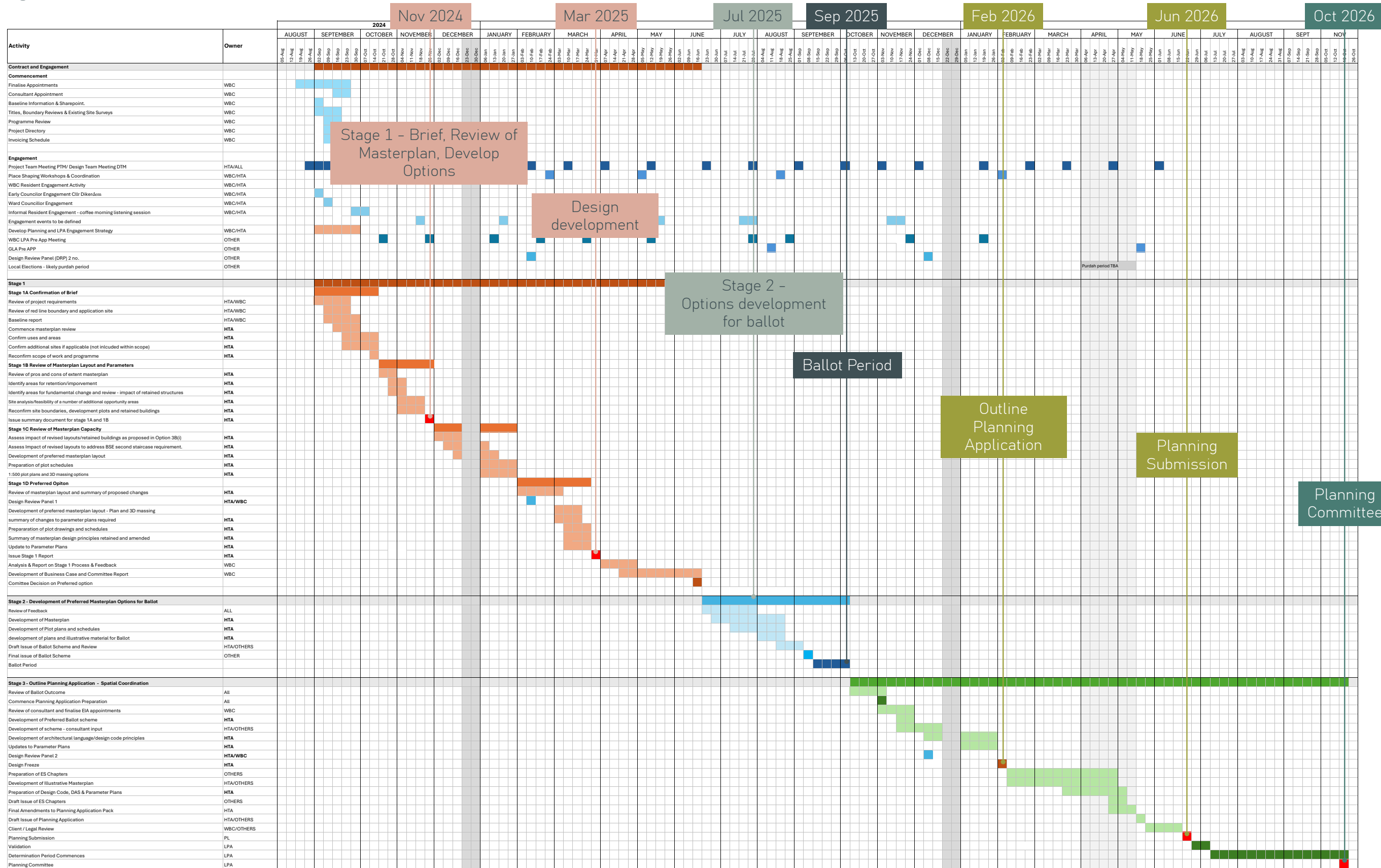
# Key themes for us to address

Testing design approaches





# Programme





[hta.co.uk](https://hta.co.uk)

[@HTADesign](https://www.instagram.com/HTADesign)

[in](https://www.linkedin.com/company/hta) [X](https://twitter.com/HTADesign)